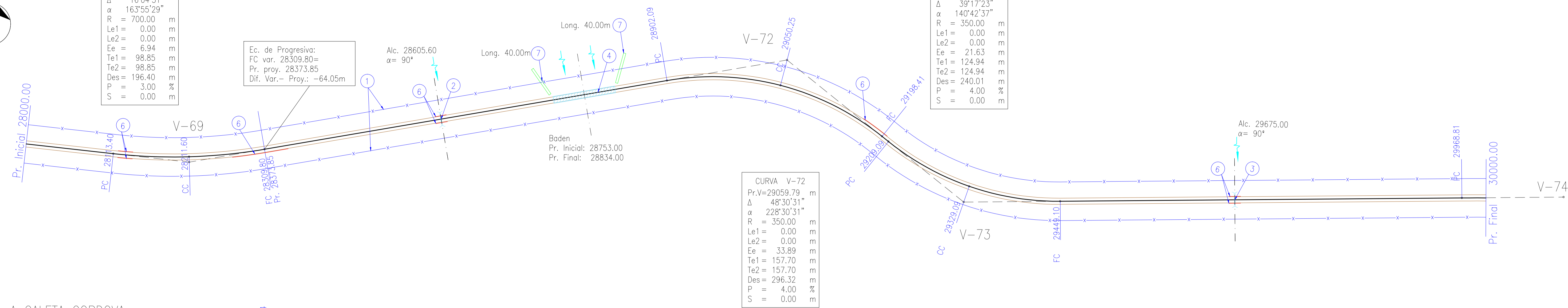


CURVA V-69
Pr.V=28212.25 m
 $\Delta = 16^{\circ}04'31''$
 $\alpha = 163^{\circ}55'29''$
R = 700.00 m
Le1 = 0.00 m
Le2 = 0.00 m
Ee = 6.94 m
Te1 = 98.85 m
Te2 = 98.85 m
Des = 196.40 m
P = 3.00 %
S = 0.00 m

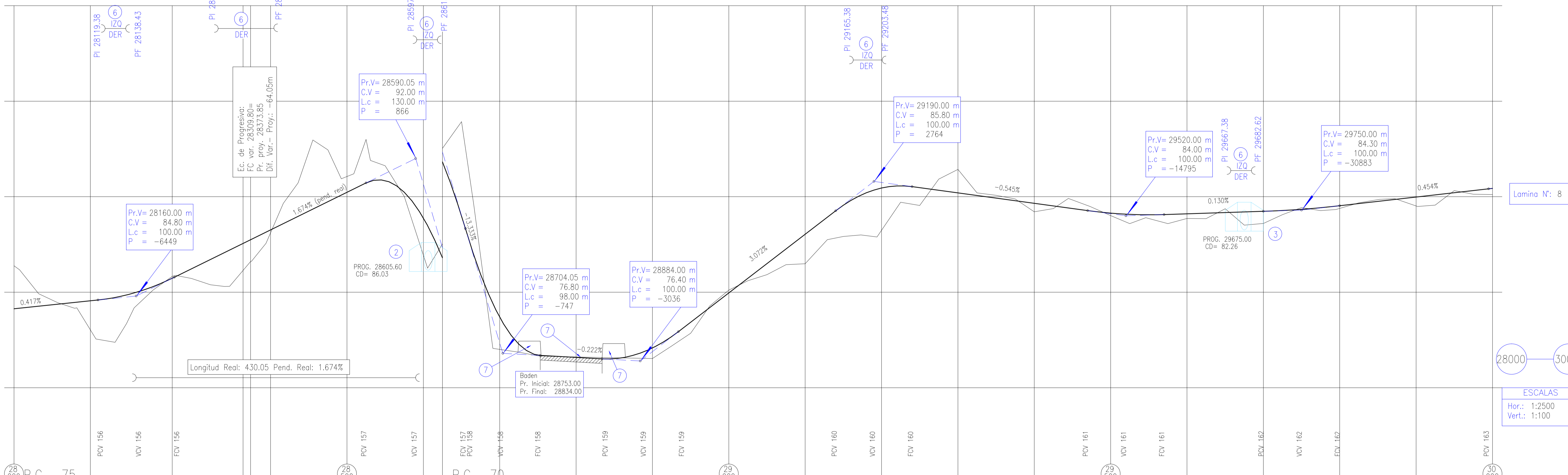
Ec. de Progresiva:
FC var. 28309.80=
Pr. proy. 28373.85
Dif. Var. - Proj.: -64.05m

CURVA V-73
Pr.V=29334.03 m
 $\Delta = 39^{\circ}17'23''$
 $\alpha = 140^{\circ}42'37''$
R = 350.00 m
Le1 = 0.00 m
Le2 = 0.00 m
Ee = 21.63 m
Te1 = 124.94 m
Te2 = 124.94 m
Des = 240.01 m
P = 4.00 %
S = 0.00 m

CURVA V-72
Pr.V=29059.79 m
 $\Delta = 48^{\circ}30'31''$
 $\alpha = 228^{\circ}30'31''$
R = 350.00 m
Le1 = 0.00 m
Le2 = 0.00 m
Ee = 33.89 m
Te1 = 157.70 m
Te2 = 157.70 m
Des = 296.32 m
P = 4.00 %
S = 0.00 m



A CALETA CORDOVA A PUERTO VISSER



ESTACION	COTAS TERRENO	COTAS PROYECTO	DIFERENCIAS	DESB DESTR UM TERRENO	ALAMBRADOS IZQUIERDO TRASLADAR DERECHO CONSTRUIR	CALZADA
28000.00	84.13	86.39	-2.25			
28010.00	84.16	86.17	-2.01			
28020.00	84.26	84.92	-0.66			
28030.00	84.37	84.44	-0.07			
28040.00	84.46	84.16	0.30			
28050.00	84.47	84.18	0.29			
28060.00	84.58	82.25	2.03			
28070.00	84.69	82.38	2.31			
28080.00	84.85	83.35	1.50			
28090.00	84.96	84.18	0.78			
28100.00	85.29	85.11	0.18			
28110.00	85.73	85.82	-0.09			
28120.00	85.78	85.88	-0.07			
28130.00	85.93	85.93	0.00			
28140.00	86.71	85.39	1.32			
28150.00	87.07	85.30	1.77			
28160.00	87.28	85.31	1.97			
28170.00	87.89	86.46	1.23			
28180.00	88.15	87.56	0.59			
28190.00	88.59	89.65	-1.06			
28200.00	89.35	92.96	-3.61			
28210.00	89.74	92.44	-2.70			
28220.00	90.08	90.93	-0.85			
28230.00	90.41	91.19	-0.78			
28240.00	90.72	93.00	-2.28			
28250.00	90.80	91.90	-1.10			
28260.00	90.83	91.61	-0.78			
28270.00	90.83	90.67	0.16			
28280.00	90.23	90.02	0.21			
28290.00	88.48	86.26	2.22			
28300.00	82.26	82.26	0.00			
28310.00	81.80	87.53	-5.73			
28320.00	83.38	88.93	-4.95			
28330.00	81.94	84.54	-2.60			
28340.00	79.42	77.06	2.36			
28350.00	77.28	76.85	0.43			
28360.00	76.85	74.00	2.85			
28370.00	76.91	76.67	0.04			
28380.00	76.64	76.63	0.01			
28390.00	76.55	76.55	0.00			
28400.00	76.61	76.61	0.00			
28410.00	77.44	77.44	0.00			
28420.00	77.67	77.67	0.00			
28430.00	78.43	77.84	0.59			
28440.00	79.20	79.28	-0.08			
28450.00	79.96	80.10	-0.14			
28460.00	80.73	80.59	0.14			
28470.00	81.50	80.92	0.58			
28480.00	82.27	81.43	0.84			
28490.00	83.04	81.48	1.56			
28500.00	83.03	82.75	0.28			
28510.00	84.26	84.00	0.26			
28520.00	84.55	82.92	1.63			
28530.00	85.08	83.00	2.08			
28540.00	85.35	85.35	0.00			
28550.00	85.39	82.89	2.50			
28560.00	85.56	84.70	0.86			
28570.00	85.53	240.00	0.93			
28580.00	85.47	84.54	0.93			
28590.00	85.33	85.92	-0.59			
28600.00	85.20	86.43	-1.23			
28610.00	85.06	85.19	-0.13			
28620.00	84.92	85.06	-0.14			
28630.00	84.79	84.88	-0.09			
28640.00	84.65	84.20	0.45			
28650.00	84.51	84.38	0.13			
28660.00	84.41	84.91	-0.50			
28670.00	84.27	84.48	-0.21			
28680.00	84.13	84.01	0.12			
28690.00	84.08	83.58	0.49			
28700.00	84.05	83.90	0.15			
28710.00	84.07	83.58	0.49			
28720.00	84.10	83.85	0.25			
28730.00	84.13	83.84	0.29			
28740.00	84.16	84.36	-0.20			
28750.00	84.20	83.51	0.69			
28760.00	84.23	83.59	0.64			
28770.00	84.27	84.06	0.21			
28780.00	84.34	84.43	-0.09			
28790.00	84.42	84.27	0.15			
28800.00	84.32	84.32	0.00			
28810.00	84.64	84.68	-0.04			
28820.00	84.76	84.85	-0.09			
28830.00	84.90	84.90	0.00			
28840.00	84.48	84.48	0.00			
28850.00	85.09	84.56	0.53			
28860.00	85.20	85.31	-0.11			
28870.00	85.32	85.13	0.19			
28880.00	85.41	85.10	0.31			
28890.00	85.43	85.43	0.00			

Lamina N°: 8

ESCALAS
Hor.: 1:2500
Vert.: 1:100

- 1) Alombrado según plano Tipo H-2840-1, Tipo "C", total lamina: 4000.00 m.
- 2) Alc. caño s/pl. A-82, c/cab. s/pl. H-2993, D=1.0m, n=1, $\alpha = 90^{\circ}$, i=3.00%, Teje=1.21m, Ji=6.19m, Jd=6.81m, Jt=13.00m
- 3) Alc. caño s/pl. A-82, c/cab. s/pl. H-2993, D=1.0m, n=1, $\alpha = 90^{\circ}$, i=3.00%, Teje=1.21m, Ji=5.57m, Jd=6.43m, Jt=12.00m
- 4) Construcción de Badén de Gaviones y colchonetas s/pl. de detalle, longitud total: 81.00 m.
- 5) Alc. caño s/pl. A-82, c/cab. s/pl. H-2993, D=1.0m, n=1, $\alpha = 90^{\circ}$, i=3.00%, Teje=1.21m, Ji=5.57m, Jd=6.43m, Jt=12.00m
- 6) Defensa met. de acero galv. s/pl. H-10237, clase "B", postes met. total lámina: 210.00, 16 alas.
- 7) Construcción de Espaldón de defensa para encauzamiento, s/pl. de detalle, Long. 40m c/u total lámina: 80m.



JEFE ESTUDIOS:
PROYECTOS:
REVISION:
FECHA:

ADMINISTRACION DE VIALIDAD PROVINCIAL
PROVINCIA DEL CHUBUT
OBRA: RUTA PROVINCIAL N°1
TRAMO: ROCAS COLORADAS - PUERTO VISSER
SECCION : III (PROGRESIVA 20000 - PROGRESIVA 30300)
UBICACION: DEPARTAMENTO ESCALANTE

PLANIALTIMETRIA
Lamina N°: 8
PROGRESIVAS: 28000.00 a 30000.00
ESCALA HORIZONTAL: 1:2500
ESCALA VERTICAL: 1:100