

CURVA V-58
 Pr.V=22672.05 m
 Δ = 32°10'20"
 α = 147°49'40"
 R = 400.00 m
 Le1 = 0.00 m
 Le2 = 0.00 m
 Ee = 16.30 m
 Te1 = 115.35 m
 Te2 = 115.35 m
 Des = 224.60 m
 P = 4.00 %
 S = 0.00 m

CURVA V-60
 Pr.V=23310.67 m
 Δ = 20°09'01"
 α = 159°50'59"
 R = 500.00 m
 Le1 = 0.00 m
 Le2 = 0.00 m
 Ee = 7.83 m
 Te1 = 88.84 m
 Te2 = 88.84 m
 Des = 175.84 m
 P = 3.00 %
 S = 0.00 m

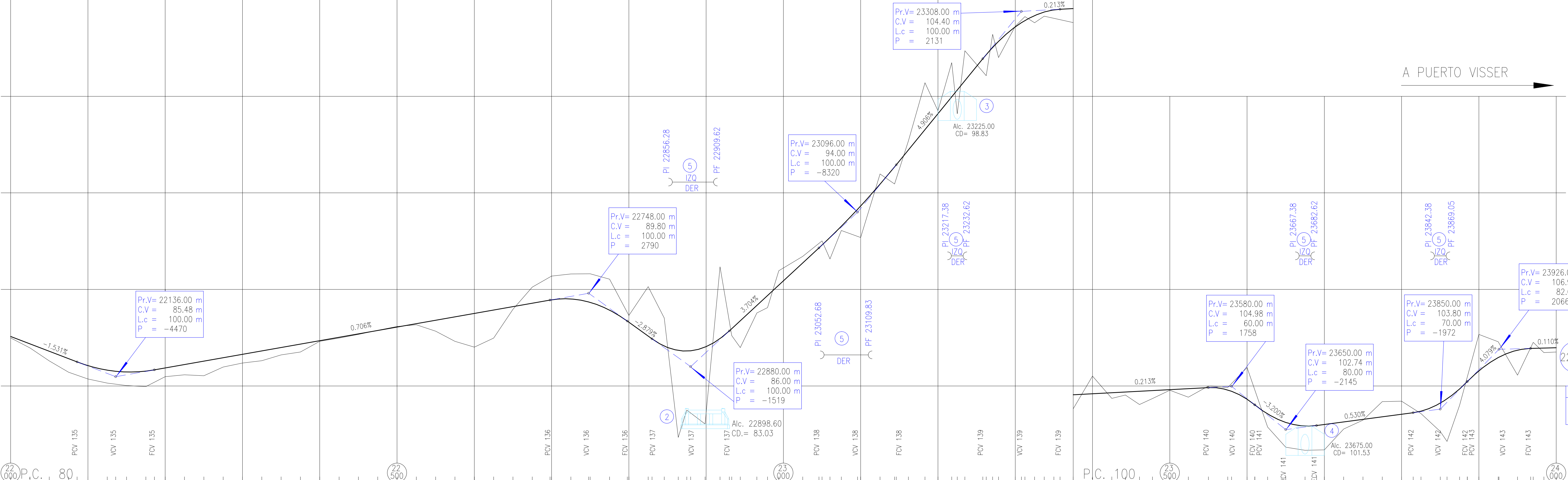
CURVA V-62
 Pr.V=23973.26 m
 Δ = 71°22'34"
 α = 108°37'26"
 R = 180.00 m
 Le1 = 0.00 m
 Le2 = 0.00 m
 Ee = 41.62 m
 Te1 = 129.29 m
 Te2 = 129.29 m
 Des = 224.23 m
 P = 6.00 %
 S = 0.00 m

CURVA V-59
 Pr.V=23036.54 m
 Δ = 30°15'55"
 α = 210°15'55"
 R = 300.00 m
 Le1 = 0.00 m
 Le2 = 0.00 m
 Ee = 10.78 m
 Te1 = 81.13 m
 Te2 = 81.13 m
 Des = 158.47 m
 P = 5.00 %
 S = 0.00 m

CURVA V-61
 Pr.V=23587.87 m
 Δ = 19°12'41"
 α = 199°12'41"
 R = 650.00 m
 Le1 = 0.00 m
 Le2 = 0.00 m
 Ee = 9.24 m
 Te1 = 110.01 m
 Te2 = 110.01 m
 Des = 217.95 m
 P = 3.00 %
 S = 0.00 m

A CALETA CORDOVA

A PUERTO VISSER



STACION	ELEVACION (m)	COTAS TERRENO (m)	DIFERENCIAS (m)
87.48	0.00	0.00	0.00
87.17	0.25	0.25	0.25
86.96	0.50	0.50	0.50
86.79	0.75	0.75	0.75
86.41	1.00	1.00	1.00
86.23	1.25	1.25	1.25
86.05	1.50	1.50	1.50
85.76	1.75	1.75	1.75
85.59	2.00	2.00	2.00
85.71	2.25	2.25	2.25
85.83	2.50	2.50	2.50
85.33	2.75	2.75	2.75
85.47	3.00	3.00	3.00
85.57	3.25	3.25	3.25
86.10	3.50	3.50	3.50
86.28	3.75	3.75	3.75
85.97	4.00	4.00	4.00
86.46	4.25	4.25	4.25
86.63	4.50	4.50	4.50
86.31	4.75	4.75	4.75
86.60	5.00	5.00	5.00
86.76	5.25	5.25	5.25
87.34	5.50	5.50	5.50
87.47	5.75	5.75	5.75
87.69	6.00	6.00	6.00
87.87	6.25	6.25	6.25
88.04	6.50	6.50	6.50
88.17	6.75	6.75	6.75
88.40	7.00	7.00	7.00
88.57	7.25	7.25	7.25
88.75	7.50	7.50	7.50
88.93	7.75	7.75	7.75
89.10	8.00	8.00	8.00
89.28	8.25	8.25	8.25
89.45	8.50	8.50	8.50
89.46	8.75	8.75	8.75
89.50	9.00	9.00	9.00
89.35	9.25	9.25	9.25
89.32	9.50	9.50	9.50
88.92	9.75	9.75	9.75
88.36	10.00	10.00	10.00
88.30	10.25	10.25	10.25
87.58	10.50	10.50	10.50
90.14	10.75	10.75	10.75
88.52	11.00	11.00	11.00
87.06	11.25	11.25	11.25
86.84	11.50	11.50	11.50
86.81	11.75	11.75	11.75
86.82	12.00	12.00	12.00
83.03	12.25	12.25	12.25
87.01	12.50	12.50	12.50
87.45	12.75	12.75	12.75
87.59	13.00	13.00	13.00
87.60	13.25	13.25	13.25
86.38	13.50	13.50	13.50
88.37	13.75	13.75	13.75
88.78	14.00	14.00	14.00
89.17	14.25	14.25	14.25
89.65	14.50	14.50	14.50
89.88	14.75	14.75	14.75
89.06	15.00	15.00	15.00
90.96	15.25	15.25	15.25
91.70	15.50	15.50	15.50
91.37	15.75	15.75	15.75
92.15	16.00	16.00	16.00
92.69	16.25	16.25	16.25
91.37	16.50	16.50	16.50
93.27	16.75	16.75	16.75
93.05	17.00	17.00	17.00
94.15	17.25	17.25	17.25
94.32	17.50	17.50	17.50
95.44	17.75	17.75	17.75
95.97	18.00	18.00	18.00
95.45	18.25	18.25	18.25
96.34	18.50	18.50	18.50
96.78	18.75	18.75	18.75
97.22	19.00	19.00	19.00
97.68	19.25	19.25	19.25
161.80	19.50	19.50	19.50
98.27	19.75	19.75	19.75
100.69	20.00	20.00	20.00
99.25	20.25	20.25	20.25
101.71	20.50	20.50	20.50
101.71	20.75	20.75	20.75
100.32	21.00	21.00	21.00
102.35	21.25	21.25	21.25
102.35	21.50	21.50	21.50
101.95	21.75	21.75	21.75
101.06	22.00	22.00	22.00
102.53	22.25	22.25	22.25
102.70	22.50	22.50	22.50
102.85	22.75	22.75	22.75
102.01	23.00	23.00	23.00
103.63	23.25	23.25	23.25
103.63	23.50	23.50	23.50
103.81	23.75	23.75	23.75
103.81	24.00	24.00	24.00
104.36	24.25	24.25	24.25
104.36	24.50	24.50	24.50
104.47	24.75	24.75	24.75
104.51	25.00	25.00	25.00
104.51	25.25	25.25	25.25
104.54	25.50	25.50	25.50
103.81	25.75	25.75	25.75
104.54	26.00	26.00	26.00
105.51	26.25	26.25	26.25
104.59	26.50	26.50	26.50
104.59	26.75	26.75	26.75
104.35	27.00	27.00	27.00
104.35	27.25	27.25	27.25
104.53	27.50	27.50	27.50
104.53	27.75	27.75	27.75
104.72	28.00	28.00	28.00
104.72	28.25	28.25	28.25
104.34	28.50	28.50	28.50
104.34	28.75	28.75	28.75
104.80	29.00	29.00	29.00
104.80	29.25	29.25	29.25
104.78	29.50	29.50	29.50
104.78	29.75	29.75	29.75
104.42	30.00	30.00	30.00
104.42	30.25	30.25	30.25
105.00	30.50	30.50	30.50
105.00	30.75	30.75	30.75
104.91	31.00	31.00	31.00
104.79	31.25	31.25	31.25
104.92	31.50	31.50	31.50
104.92	31.75	31.75	31.75
104.31	32.00	32.00	32.00
104.31	32.25	32.25	32.25
104.02	32.50	32.50	32.50
104.02	32.75	32.75	32.75
102.86	33.00	33.00	33.00
102.86	33.25	33.25	33.25
103.11	33.50	33.50	33.50
103.11	33.75	33.75	33.75
102.92	34.00	34.00	34.00
102.92	34.25	34.25	34.25
103.00	34.50	34.50	34.50
103.00	34.75	34.75	34.75
103.13	35.00	35.00	35.00
103.13	35.25	35.25	35.25
103.27	35.50	35.50	35.50
103.27	35.75	35.75	35.75
103.40	36.00	36.00	36.00
103.40	36.25	36.25	36.25
103.53	36.50	36.50	36.50
103.53	36.75	36.75	36.75
103.69	37.00	37.00	37.00
103.69	37.25	37.25	37.25
104.11	37.50	37.50	37.50
104.11	37.75	37.75	37.75
102.64	38.00	38.00	38.00
102.64	38.25	38.25	38.25
104.00	38.50	38.50	38.50
104.00	38.75	38.75	38.75
105.23	39.00	39.00	39.00
105.23	39.25	39.25	39.25
105.78	39.50	39.50	39.50
105.78	39.75	39.75	39.75
106.47	40.00	40.00	40.00
106.47	40.25	40.25	40.25
106.85	40.50	40.50	40.50
106.85	40.75	40.75	40.75
106.95	41.00	41.00	41.00
106.95	41.25	41.25	41.25
106.94	41.50	41.50	41.50
106.94	41.75	41.75	41.75
106.56	42.00	42.00	42.00
106.56	42.25	42.25	42.25
106.98	42.50	42.50	42.50
106.98	42.75	42.75	42.75

Lamina N°: 5

ESCALAS
 Hor.: 1:2500
 Vert.: 1:100

ADMINISTRACION DE VIALIDAD PROVINCIAL
 PROVINCIA DEL CHUBUT

1	Alombrado según plano Tipo H-2840-I, Tipo "C", total lamina: 4000.00 m.
2	Alc. hgón. s/pl.0-41211,n=3 H=1.00m, L= 2.00 m,Te=2.71, Ji=9.05m,Id=9.25m,It=18.30m, α 90°, i=0.82%, e=0.19m
3	Alc. caño s/pl. A-82, c/cab. s/pl. H-2993,D=1.0m, n=1, α 90°, i=0.50%,Teje=0.77m, Ji=5.20m,Id=5.80m,It=11.00m
4	Alc. caño s/pl. A-82, c/cab. s/pl. H-2993,D=1.0m, n=1, α 90°, i=1.80%,Teje=0.66m, Ji=5.50m,Id=5.50m,It=11.00m
5	Defensa met. de acero galv. s/pl. H-10237, close"B", postes met. total lómina: 278.13m, 18 alas.
6	
7	
8	
9	
10	
11	
12	



JEFE ESTUDIOS:
 PROYECTOS:
 REVISION:
 FECHA:

ADMINISTRACION DE VIALIDAD PROVINCIAL
 PROVINCIA DEL CHUBUT
 OBRA: RUTA PROVINCIAL N°1
 TRAMO: ROCAS COLORADAS - PUERTO VISSER
 SECCIÓN : III (PROGRESIVA 20000 - PROGRESIVA 30300)
 UBICACIÓN: DEPARTAMENTO ESCALANTE

PLANIALTIMETRIA
 PROGRESIVAS: 22000.00 a 24000.00
 ESCALA HORIZONTAL: 1:2500 ESCALA VERTICAL: 1:100
 Lámina N°: 5

PROGRESIVAS	DATOS ESTUDIO
COTAS TERRENO	
COTAS PROYECTO	
DIFERENCIAS	
DESBR DESTR UM TERRENO	
ALAMBRADOS IZQUIERDO TRASLADAR DERECHO CONSTRUIR	
CALZADA	