

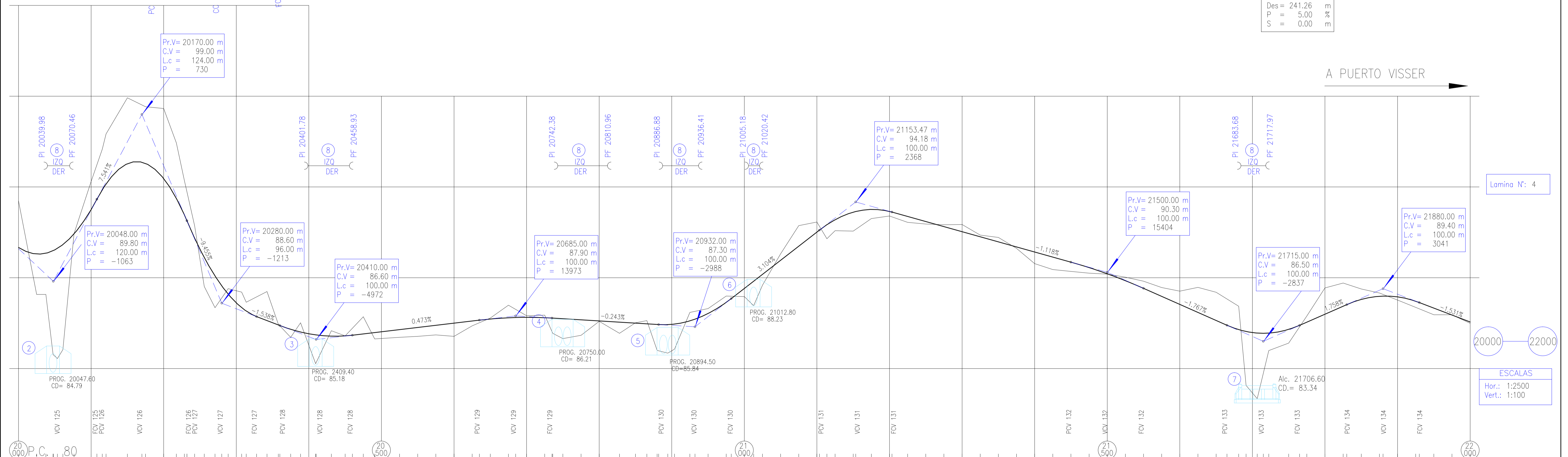
CURVA V-54		CURVA V-55	
Pr.V=20152.16	m	Pr.V=20473.61	m
$\Delta = 12'08''45''$		$\Delta = 15'15''30''$	
$\alpha = 167'51''15''$		$\alpha = 164'44''30''$	
R = 750.00	m	R = 600.00	m
Le1 = 0.00	m	Le1 = 0.00	m
Le2 = 0.00	m	Le2 = 0.00	m
Ee = 4.23	m	Ee = 5.36	m
Te1 = 79.79	m	Te1 = 80.37	m
Te2 = 79.79	m	Te2 = 80.37	m
Des = 158.99	m	Des = 159.78	m
P = 3.00	%	P = 3.00	%
S = 0.00	m	S = 0.00	m

CURVA V-56	
Pr.V=21143.20	m
$\Delta = 38'28''07''$	
$\alpha = 218'28''07''$	
R = 300.00	m
Le1 = 0.00	m
Le2 = 0.00	m
Ee = 17.74	m
Te1 = 104.67	m
Te2 = 104.67	m
Des = 201.42	m
P = 5.00	%
S = 0.00	m

CURVA V-57	
Pr.V=21835.62	m
$\Delta = 46'04''37''$	
$\alpha = 226'04''37''$	
R = 300.00	m
Le1 = 0.00	m
Le2 = 0.00	m
Ee = 26.00	m
Te1 = 127.58	m
Te2 = 127.58	m
Des = 241.26	m
P = 5.00	%
S = 0.00	m

A CALETA CORDOVA

A PUERTO VISSER



Lamina N°: 4

ESCALAS
Hor.: 1:2500
Vert.: 1:100

PROGRESIVAS	DATOS ESTUDIO
94.22_000.00	
89.07_025.00	
89.07_027.70	
85.77_048.00	
85.25_053.60	
82.43_076.40	
95.30_100.00	
94.32_108.00	
94.32_113.35	
97.92_130.35	
96.28_150.00	
96.37_170.00	
96.30_175.00	
99.31_200.00	
97.43_217.40	
95.35_228.50	
93.14_232.00	
92.85_242.70	
88.34_270.30	
89.35_280.00	
89.40_288.90	
89.20_307.40	
88.65_313.70	
87.86_328.00	
87.63_342.40	
87.43_358.00	
87.37_360.00	
86.71_375.00	
87.01_388.60	
85.27_409.40	
87.07_431.00	
86.80_450.00	
86.84_460.00	
87.84_475.00	
86.63_490.70	
86.71_525.00	
86.77_550.00	
86.84_575.00	
86.77_600.00	
87.34_625.00	
87.66_635.00	
87.78_650.00	
88.48_675.00	
87.81_685.00	
87.91_700.00	
87.93_725.00	
87.78_735.00	
86.93_756.00	
87.74_766.00	
86.65_790.00	
86.82_775.00	
87.72_800.00	
86.83_828.00	
87.49_850.00	
87.64_865.70	
87.42_879.00	
87.41_894.50	
86.06_903.80	
87.62_925.00	
87.72_932.00	
88.30_950.00	
88.98_975.00	
88.85_982.00	
89.41_1000.00	
88.95_1012.80	
90.18_1025.00	
90.96_1050.00	
91.73_1075.00	
92.86_1100.00	
92.51_1103.47	
92.62_1137.00	
93.79_125.00	
92.56_150.00	
93.65_153.47	
93.76_175.00	
93.40_200.00	
93.62_203.47	
93.05_225.00	
92.95_250.00	
92.81_275.00	
92.53_300.00	
92.34_325.00	
92.21_350.00	
91.61_375.00	
90.78_400.00	
90.44_425.00	
90.34_450.00	
90.25_475.00	
90.19_500.00	
90.03_525.00	
89.81_550.00	
89.45_575.00	
89.26_600.00	
89.46_625.00	
89.19_650.00	
88.43_681.10	
84.06_691.30	
83.33_708.60	
85.98_722.60	
86.40_750.00	
87.50_765.00	
87.89_775.00	
89.43_800.00	
89.70_825.00	
89.00_830.00	
89.38_850.00	
89.16_875.00	
88.00_880.00	
88.94_887.70	
88.36_925.00	
87.95_950.00	
87.95_975.00	
87.48_1000.00	

SIGNIFICADO DE LOS NUMEROS	1) Alombrado según plano Tipo H-2840-I, Tipo "C", total lámina: 4000.00 m.	2) Alc. caño s/pl. A-82, c/cab. s/pl. H-2993, D=1.0m, n=1, $\alpha = 90^\circ$, i=2.92%, Teje=5.97m, Ji=12.39m, Jd=13.61m, Jt=26.00m.	3) Alc. caño s/pl. A-82, c/cab. s/pl. H-2993, D=1.0m, n=1, $\alpha = 90^\circ$, i=2.45%, Teje=0.94m, Ji=5.20m, Jd=5.80m, Jt=11.00m.	4) Alc. caño s/pl. A-82, c/cab. s/pl. H-2993, D=1.0m, n=2, $\alpha = 90^\circ$, i=0.50%, Teje=0.85m, Ji=5.50m, Jd=5.50m, Jt=11.00m.	5) Alc. caño s/pl. A-82, c/cab. s/pl. H-2993, D=1.0m, n=2, $\alpha = 90^\circ$, i=0.50%, Teje=0.85m, Ji=5.50m, Jd=5.50m, Jt=11.00m.	6) Alc. caño s/pl. A-82, c/cab. s/pl. H-2993, D=1.0m, n=1, $\alpha = 90^\circ$, i=0.50%, Teje=0.85m, Ji=5.60m, Jd=5.40m, Jt=11.00m.	7) Alc. hgn. s/pl. O-41211, n=3, H=1.00m, L=2.00m, Te=2.16, Ji=8.30m, Jd=8.30m, Jt=16.60m, $\alpha = 90^\circ$, i=0.84%, e=0.19m.	8) Defensa met. de acero gov. s/pl. H-10237, clase "B", postes met. total lámina: 510.54m, 24 alqs.
	PROVINCIA DEL CHUBUT	A.V.P.		PROVINCIA DEL CHUBUT		JEFE ESTUDIOS: PROYECTOS: REVISION: FECHA:		ADMINISTRACION DE VIALIDAD PROVINCIAL PROVINCIA DEL CHUBUT OBRA: RUTA PROVINCIAL N°1 TRAMO: ROCAS COLORADAS - PUERTO VISSER SECCIÓN: III (PROGRESIVA 20000 - PROGRESIVA 30300) UBICACIÓN: DEPARTAMENTO ESCALANTE